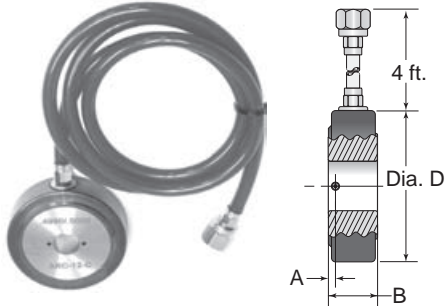
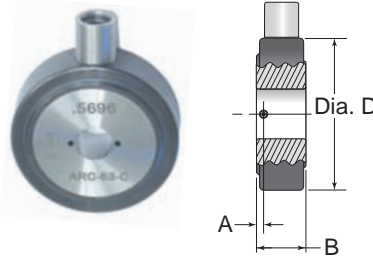


Air Ring Gage Dimensional Data - Single & Dual master

See page 27 for Air Ring Gage order codes



Series 10 - 50 (includes hose)



Series 60 - 80 (Order hose separately -- see pg 21)

Dual Master						
Air Ring Dimensional data, Series 10 thru 50						
Air ring gage body dimensions (inches / millimeters):						
Size	Dimension A			Dim. B	Dia. D	
above -incl	ARC	ARS	ARX	Dim. B	Dia. D	
.061 - .070*	.250	---	---	.500	1.73	
1.55 - 1.78	6.35	1.91	---	12.70	43.94	
.070 - .183	.281	.075	---	.562	1.73	
1.78 - 4.65	7.14	1.91	---	14.27	43.94	
.183 - .300	.281	.095	.080	.562	1.85	
4.65 - 7.62	7.14	2.41	2.03	14.27	46.99	
.300 - .760	.375	.095	.080	.750	2.31	
7.62 - 19.30	9.53	2.41	2.03	19.05	58.67	
.760 - 1.760	.500	.125	.085	1.000	3.31	
19.30 - 44.70	12.70	3.18	2.16	25.40	84.07	
1.760 - 3.010	.560	.125	.085	1.120	4.62	
44.70 - 76.45	14.22	3.18	2.16	28.45	117.35	
3.010 - 4.000	.625	.135	.090	1.250	5.87	
76.45 - 101.60	15.88	3.43	2.29	31.75	149.10	
4.000 - 4.875	.625	.135	.090	1.250	6.87	
101.60 - 123.83	15.88	3.43	2.29	31.75	174.50	
4.875 - 5.750	.625	.135	.090	1.250	7.87	
123.83 - 146.05	15.88	3.43	2.29	31.75	199.90	
5.750 - 6.625	.625	.135	.090	1.250	8.87	
146.05 - 168.28	15.88	3.43	2.29	31.75	225.50	
6.625 - 7.500	.625	.135	.090	1.250	9.87	
168.28 - 190.50	15.88	3.43	2.29	31.75	250.70	

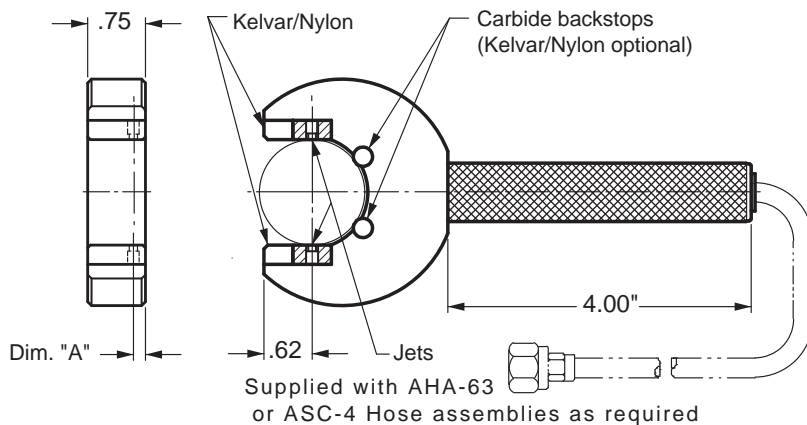
Series 10, 40 & 50 fittings: Air ring gages are furnished with 4 ft (1.22 mm) hoses with .44-20 female flare fittings.

* Air ring sizes .061 to .183 are available in 3 jet, carbide only.

Single Master						
Air Ring Dimensional data, Series 60 thru 80						
Air ring gage body dimensions (inches / millimeters):						
Size	Dimension A			Dim. B	Dia. D	
above -incl	ARC	ARS	ARX	Dim. B	Dia. D	
.183 - .300	.281	.095	.080	.562	1.85	
4.65 - 7.62	7.14	2.41	2.03	14.27	46.99	
.300 - .760	.375	.095	.080	.750	2.31	
7.62 - 19.30	9.53	2.41	2.03	19.05	58.67	
.760 - 1.760	.500	.125	.085	1.000	3.31	
19.30 - 44.70	12.70	3.18	2.16	25.40	84.07	
1.760 - 3.010	.560	.125	.085	1.120	4.62	
44.70 - 76.45	14.22	3.18	2.16	28.45	117.35	
3.010 - 4.000	.625	.135	.090	1.250	5.87	
76.45 - 101.60	15.88	3.43	2.29	31.75	149.10	
4.000 - 4.875	.625	.135	.090	1.250	6.87	
101.60 - 123.83	15.88	3.43	2.29	31.75	174.50	
4.875 - 5.750	.625	.135	.090	1.250	7.87	
123.83 - 146.05	15.88	3.43	2.29	31.75	199.90	
5.750 - 6.625	.625	.135	.090	1.250	8.87	
146.05 - 158.75	15.88	3.43	2.29	31.75	225.50	
6.625 - 7.500	.625	.135	.090	1.250	9.87	
168.28 - 190.50	15.88	3.43	2.29	31.75	250.70	

Fittings:
 Series: 60 & 80 .375-32 UNEF fitting (order hose separately).
 Series: 70 .281-40 UNS fitting (order hose separately).

Air C-Gage Dimensional Data - Single & Dual Master



C-Gage Order Code:

Style AC [] - [] - [] - []

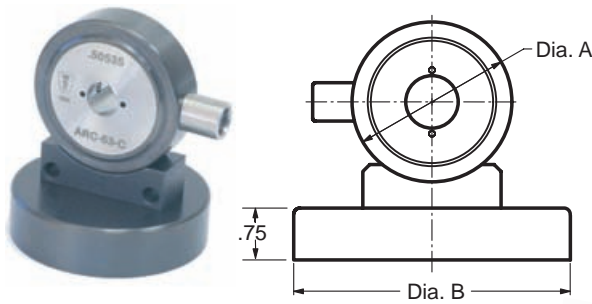
Air gage series Backstop material Workpiece diameter

C-Gage type	Code	Dim. A
Shoulder Jet	ACS	.156 (4.0)
Center Jet	ACC	.375 (9.5)

C-Gages are available for O.D. sizes from .60" to 7.81" (15.2 - 198.3 mm).
 Multi-channel C-Gages are available as custom designs.

Accessories for Air Ring Gages - Single & Dual Master

Base stands for air ring gages



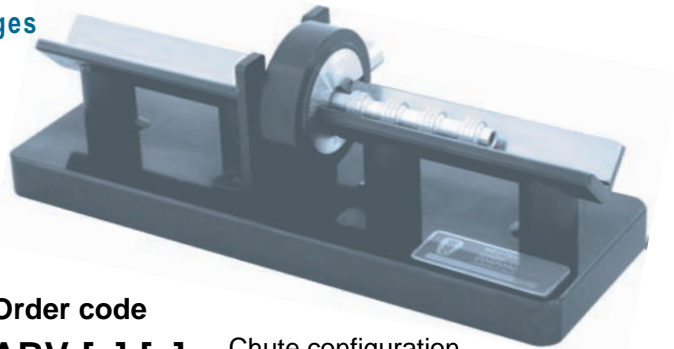
Order codes for base stands

Code	Range	Dia. A	Dia. B
ABA-0	.120 - .183 (.305 - 4.65 mm)	1.73"	2.94"
ABA-1	.183 - .300 (4.65 - 7.62 mm)	1.85	2.94
ABA-2	.300 - .760 (7.62 - 19.30 mm)	2.31	3.94
ABA-3	.760 - 1.760 (19.30 - 44.70 mm)	???	5.94
ABA-4	1.760 - 3.010 (44.70 - 76.45 mm)	4.63	5.94

Requires factory drilled mounting holes in the air ring housing.

Vee type Guide Chutes for air ring gages

Air Ring Gage Guide Chutes provide convenient means of gaging long parts with interrupted external diameters such as valve spools. Chutes can be ordered as single end or double end.

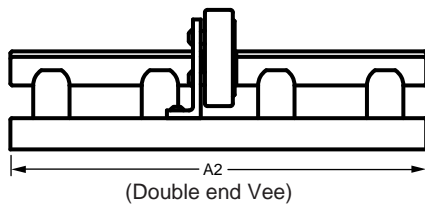
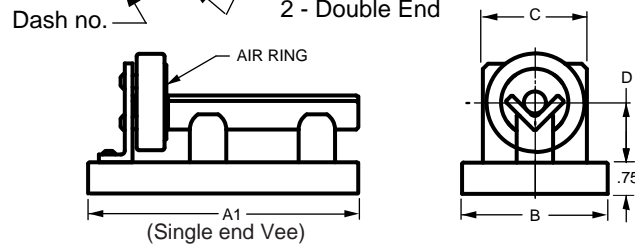


Dash No.	Gaging Range	Dimensions				
		A1	A2	B	C	D
-1	.183-.300	5.66	8.00	3.00	2.00	1.09
-2	.300-.760	6.74	10.00	3.50	3.00	1.60
-3	.760-1.760	7.87	12.00	4.00	3.50	2.46
4	1.760-2.312	9.13	14.00	5.00	4.13	2.65

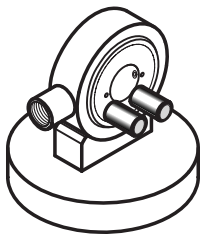
Requires factory modification of air ring housing.

Order code

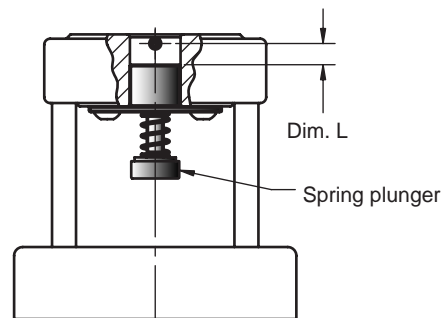
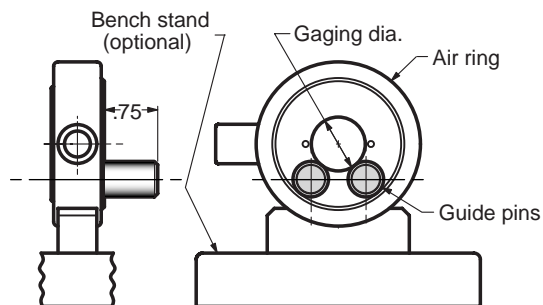
ABV-[]-[] Chute configuration
 1 - Single End
 2 - Double End



Guide pins & backstops



Guide pins can be added to an air ring gage to guide short parts. Consult factory for this modification.



Plunger backstops facilitate inspection of short parts such as bearing races. Factory installation is required, specify Dim. L when ordering the air ring gage. Base stand with standoffs is optional.