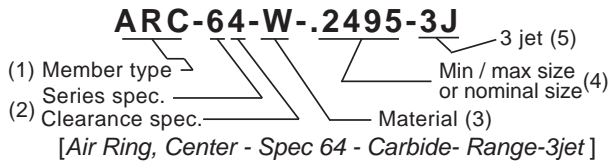
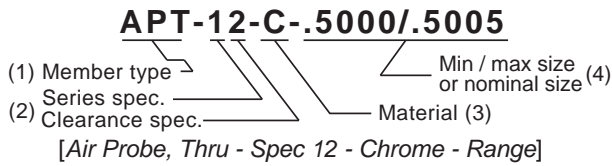


Sample Order Codes & Check Lists

AIR PROBES & AIR RINGS



Check List for Air Probes & Air Rings

(1) Gaging member type order code

Air Probe, Thru-hole	APT
Air Probe, Blind	APB
Air Probe, Super blind	APS
Air Ring, Center jet	ARC
Air Ring, Shoulder	ARS
Air Ring, extra close	ARX

(2) Series specification. Match the gage with the series that includes the Readout it is to be used with. Then complete the gaging member specification by changing the last digit of the series number to show the clearance specification. Pages 18 & 20 show standard clearances for dual and single master systems.

(3) Material order code

Steel	S
Chrome	C
Carbide	W
CPM-10V (Premium wear resistant tool steel)	V

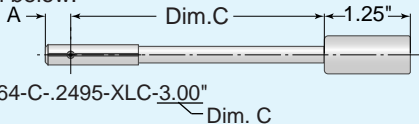
(4) Size of the setting master(s).

Gaging members for Series 10 - 50 comparators require that both minimum and maximum setting master sizes be specified. Series 60 thru 80 members require only the nominal size. Add suffix "mm" to denote millimeter sizes.

(5) Special requirements -- modifications required for the application such as:

Three Jets - add suffix "-3J" to order code. (Two-jet members are furnished unless otherwise specified).

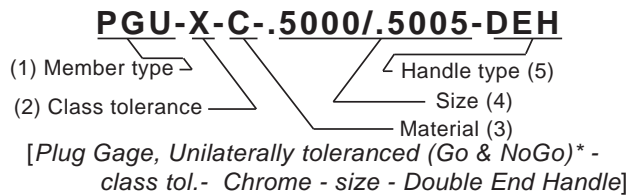
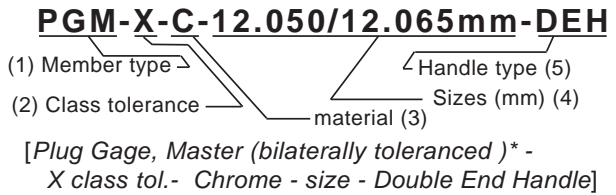
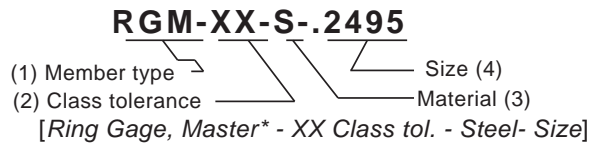
Extra length - Extra length is required for small air probes to gage deep holes -- add suffix "-XLC" and specify the jet to handle dimension ["C"]. -- see illustration below.



Other specials - for modification to standard blanks not requiring a custom drawing, add suffix "-SP" and specify modification in remarks field.

(6) Special marking. Gaging member sizes are marked on all members. Customer tool numbers will be added upon request. Numbers with more than 10 characters are subject to additional charges.

SETTING MASTERS



* see notes on bilateral & unilateral class tolerances on page 25.

Check List for Setting Masters

(1) Specify member type order codes

Ring Gage, Master	RGM
Ring Gage, Go	RGG
Ring Gage, NoGo	RGN
Plug Gage, Master	PGM
Plug Gage, Go	PGG
Plug Gage, NoGo	PGN
Plug Gage, Go/NoGo set	PGU
Set Disc, (ANSI B47.1 style 3)	SDS
Set Disc, (ANSI B47.1 style 1)	SDL

(2) Specify class tolerance. Select class tolerance Z thru XXX from the table pg-25. Bilaterally toleranced master gages are recommended for air gage applications.

(3) Material order codes

Steel	S
Chrome	C
Carbide	W

(4) Specify size(s) of setting master. Sizes are assumed to be in inches unless followed by "MM"(millimeters). **Careful checking of required size prevents expensive mistakes.**

(5) Select handle type (Plug gages only)

Single end handle	SEH
Double end handle	DEH
Member only	M/O

(6) Specify marking. Size and class tolerance are marked on all master gages. Customer tool numbers up to ten characters will be marked at no charge.